


SERVICEKIT

Salamander GENUINE parts

SKMECHA02 MECH



RSP/RHP/ESP/RGP pumps (50/55 only)

Salamander Pumps 

Making
water
perform



Instructions **VIDEOLINK:**



Salamander Pumps Shower Systems Limited

Unit 2c Colima Avenue, Enterprise Park West,
Sunderland, SR5 3XE

Telephone: 0191 516 2002

Facsimile: 0191 548 4445

Email: sales@salamanderpumps.co.uk

www.salamanderpumps.co.uk



PLEASE NOTE:

By using the parts included in this pack to repair your pump, you will be invalidating any warranty you have on the pump.

Returns:

If you need to return this pack for any reason please ensure the original packaging and these instructions leaflets are returned also. If you have any questions or queries regarding this spares pack or any other pump related questions please contact us.

UK:

Salamander Pumped Shower Systems Limited
Unit 2c, Colima Avenue Enterprise Park West
Sunderland SR5 3XE

Tel: 0191 516 2002

Email: tech@salamanderpumps.co.uk

Eire:

MTA agencies Ireland Fearn House,
Unit 4 Jamestown Business Park
Jamestown Road Finglas,
Dublin 11

Tel: +353 (0)1 864 3363

Email: service@mtagencies.ie

INTRODUCTION

RSP/RHP/ESP/RGP pumps (50/55 only)

Tools required :

- Pliers
- Seal Tool - XTOOLS 01
- M6 Allen bit/Wrench
- Torque Driver
- Soap Water Solution 5%
- 10mm Spanner
- 10mm socket

Parts in Service kit:

- Rotary Seal 10mm - SROTAR02 (10) x 2
- Static Seal 10mm - SSTATI02 (9) x 2
- Body O ring 114.5mm - SORING18 (BOR) Blue EPDM (15) x 2
- Wire Clip- FWIREC01 (11) x 2
- M6 Allen Bolt M6 x 30mm - FBOLTM03 (37) x 12
- M6 Nut- FNUT601 (38) x 12
- Filter Washer-SFILTE01(39) x 2
- Rubber Washer-SFLATW01(40) x2
- Seal Tool - XTOOLS 01

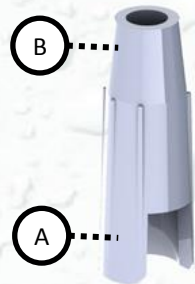
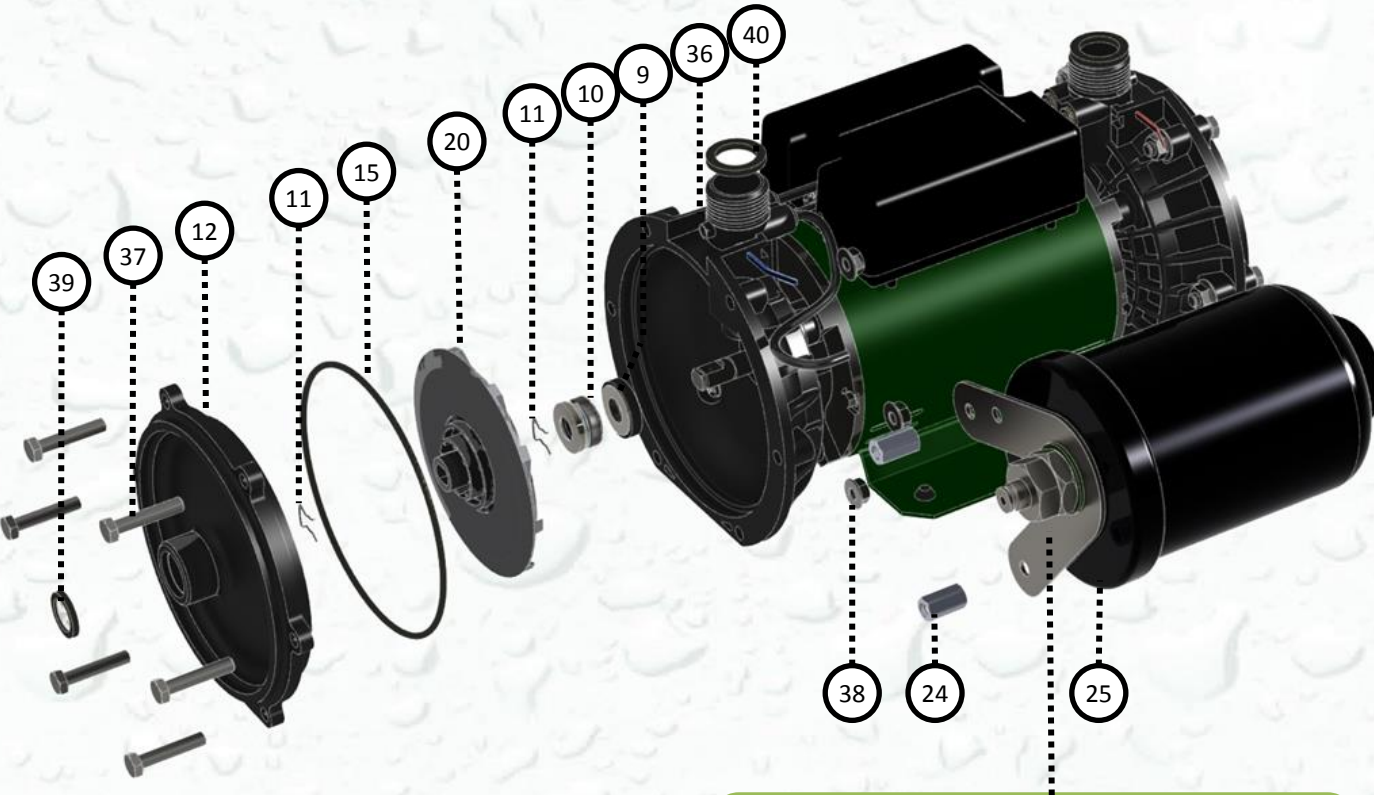
WARNING! ENSURE PUMP IS ISOLATED FROM ELECTRICITY AND WATER SUPPLY. IF IN DOUBT CONSULT A COMPETENT TRADESMAN.

Pump should be serviced in horizontal position with couples disconnected and water and electricity supply isolated.

DO NOT RUN PUMP DRY. ALLOW WATER TO FILL PUMP TO LUBRICATE SEALS BEFORE STARTING. CHECK FOR LEAKS DURING TEST BEFORE BEING SATISFIED PUMP IS OK

SERVICE INSTRUCTIONS:

1. Remove x 6 M6 bolts (37) and M6 nuts (38)
2. Remove inlet (12) noticing its orientation.
3. Remove wire clip (11) and impellor (20) noticing their orientation. The impellor may be difficult to remove and may require a puller or two levers .i.e. Flat screwdrivers to lever off carefully. Remove O ring (15) and discard
4. Notice rotary seal wire clip (11) position and remove wire clip and discard.
5. Remove rotary seal (10) and discard.
6. Remove static seal (9) and discard.(Do not damage seal housing areas or shaft !!)
7. Remove any debris and clean all exposed areas.
8. Lubricate Inner seal area and shaft with soap water solution.
9. Carefully place the new static seal over shaft and press into housing ensuring flat against seal housing area and level using seal tool end A.
10. Separate the new rotary seal into seal, spring and cap.
11. Place seal over shaft with carbon face on the underside.
12. Push seal into place using seal tool end B ensuring good contact with static seal.
13. Refit new spring and cap onto rotary seal.
14. Compress spring and push new wire clip into its previous location slot on the shaft using long nosed pliers.
15. Refit impellor in the same orientation it was removed. Nip exposed clip ends around shaft with long nosed pliers.
16. Fit new blue body O-Ring (15) ensuring it is not rolled and fully in place with in the outlet seal housing.
17. Refit inlet ensuring it is level and fully flush to the outlet around it's total circumference.
18. Secure inlet with new M6 10mm Allen bolts and new M6 10mm nyloc nuts by driving diagonally opposite in stages to a Torque of: **3Nm +/- 0.15**
19. Repeat for opposite side if required .Replace filter (39) and rubber washers (40) before reconnecting couplers. Service is now complete and ready for test.



Seal Tool - XTOOLS - 01

Note 1: ESP Model

When removing the pressure vessel c/w bracket (24) from the outlet (36), note its orientation and configuration of the 2 x 10mm nut and bolt assemblies. (Lay the vessel to one side but do not disconnect the bi pass tube.) Refit in the same orientation and torque to 3Nm