

# SERVICEKIT

Salamander GENUINE parts

SKELECT06 ELECT & MECH



CT FORCE CT Xtra CT BATHROOM

Salamander Pumps

Making  
water  
perform



Instructions **VIDEOLINK:**



## Salamander Pumps Shower Systems Limited

Unit 2c Colima Avenue, Enterprise Park West,  
Sunderland, SR5 3XE

**Telephone:** 0191 516 2002

**Facsimile:** 0191 548 4445

**Email:** sales@salamanderpumps.co.uk

[www.salamanderpumps.co.uk](http://www.salamanderpumps.co.uk)



### PLEASE NOTE:

By using the parts included in this pack to repair your pump, you will be invalidating any warranty you have on the pump.

### Returns:

If you need to return this pack for any reason please ensure the original packaging and these instructions leaflets are returned also. If you have any questions or queries regarding this spares pack or any other pump related questions please contact us.

### UK:

Salamander Pumped Shower Systems Limited  
Unit 2c, Colima Avenue Enterprise Park West  
Sunderland SR5 3XE

Tel: 0191 516 2002

Email: tech@salamanderpumps.co.uk

### Eire:

MTA agencies Ireland Fearn House,  
Unit 4 Jamestown Business Park  
Jamestown Road Finglas,  
Dublin 11

Tel: +353 (0)1 864 3363

Email: service@mtagencies.ie

## INTRODUCTION

This document advises the tools, spares and instruction to service:

All CT FORCE/CT Xtra / Bathroom  
(Positive Head)

### Tools required:

- PZ2 Screwdriver
- 7mm Deep socket
- Long nose pliers
- Snips
- 5.6mm Allen wrench

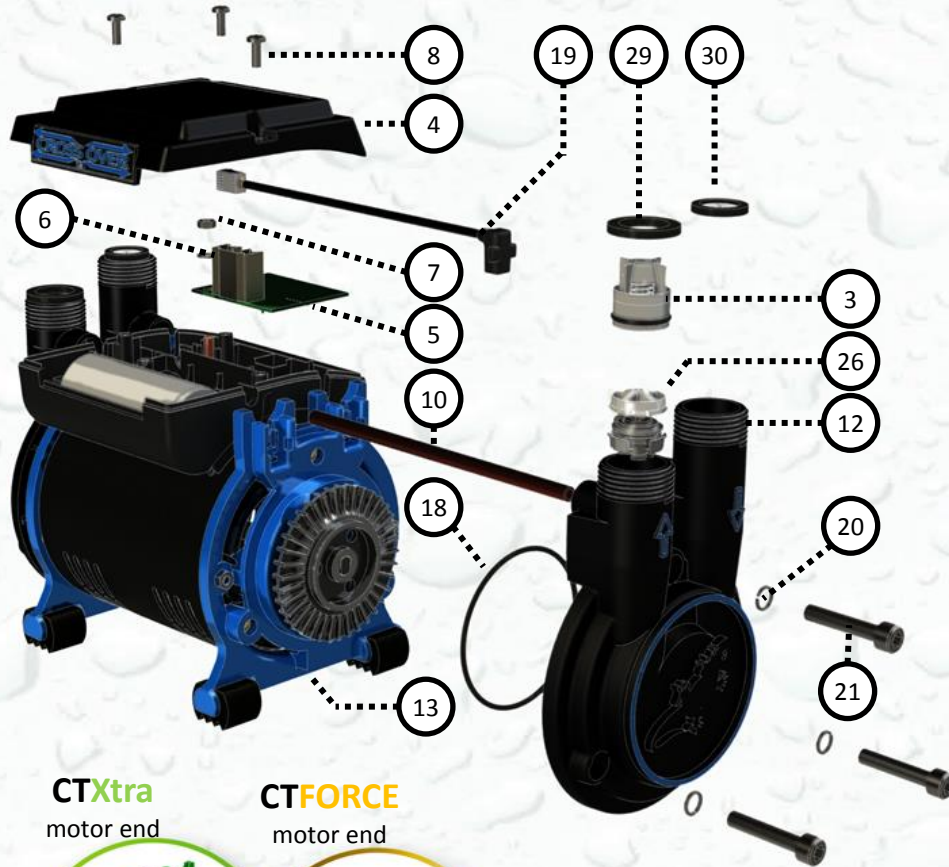
### Parts included in Service Kit:

- Float- PFLOAT(3) x 2
- NRV - CNRVPL01 (26) x 2
- Hall Effect sensor - EHALL05 (19) x 2
- Interface -EPCBUN04 (12) x 1
- Body O ring 59.6 mm OD - SORING17 (BOR) Blue EPDM (18) x 2
- Filter Washer-SFILTE01 (30) x 2
- Rubber Washer-SFLATW01(31) x2
- Screw No :6 FSCREW11 (8) x 3
- Cable Tie FCable 01 x 1

**WARNING! ENSURE PUMP IS ISOLATED FROM ELECTRICITY AND WATER SUPPLY. IF IN DOUBT CONSULT A COMPETENT TRADESMAN.**

**Pump should be serviced in horizontal position with couples disconnected and water and electricity supply isolated.**

**DO NOT RUN PUMP DRY. ALLOW WATER TO FILL PUMP TO LUBRICATE SEALS BEFORE STARTING. CHECK FOR LEAKS DURING TEST BEFORE BEING SATISFIED PUMP IS OK.**



1. Remove Non Return Valve (NRV) (3) noticing its orientation using long nosed pliers and discard.
2. Remove Float(26) noticing its orientation.
3. Repeat above steps for opposite pump side.
3. Remove Junction box (JB) box lid (4) screws (8) using P22 screwdriver and retain
4. Remove JB lid (4) and retain.
5. Disconnect Hall Effect (HE) sensor lead (19)
6. Remove Pinlet (12) retaining bolts (21) x 3 and Spring washers (20) using 6mm Allen wrench.  
IF BATHROOM version: Using a 7mm OE Spanner push in Carstick 6mm bi pass tube (10) retaining ring and remove Pinlet (12) leaving bi pass connected to the opposite Pinlet.
7. Remove Pinlet and discard Body O-Ring (BOR)(18).
8. Remove HE sensor(19) from motor end shield housing, noting its orientation and discard.
9. Fit new Blue BOR, ensuring it is not rolled and is flush.
10. Insert new HE sensor (19) into motor end shield housing and insert into JB base cable slot.
11. Refit Pinlet ensuring level engagement with BOR and ( Bathroom Bi pass is inserted into carstick within the pinlet if applicable ) . Secure with retaining bolts and spring washers by incremental clockwise tightening in stages to : 2.3Nm +/- 0.5Nm  
**DO NOT OVER TIGHTEN**
12. Repeat above steps for opposite pump side.
13. Snip cable tie and disconnect mains and motor cables noting their orientation.
14. Remove M4 Nut(7) and M4 washer(6) using 7mm deep socket.
12. Remove PCB interface (5)
13. Fit new PCB interface
14. Secure with M4 Nut and washer and tighten to 1.95Nm +/- 0.1 Nm.
15. Reconnect both HE sensors and mains ,motors cables as per PCB diagram. Ensure cables are routed via JB base cable slots and secure with cable tie.
16. Refit Junction box lid checking no cables are trapped.
17. Resecure JB lid screws to hand tight.
18. Insert new Float (26) into Pinlet OUTLET (12) ensuring magnet is facing the HE, in the same orientation as removed and pushed down till it stops.
19. Push fit new NRV directly on top of the float.
20. Repeat above steps for opposite pump side.
21. Reconnect couplers ensuring filter(30) and rubber washers (29) are seated correctly. Service is now complete and ready for test.

**CTXtra**  
motor end

**CTFORCE**  
motor end

